

# Economical Container House Design Description

## Building overview:

The standard container size is 6000x2438mm(height:2591mm, indoor net height:2330mm). 50mm EPS sandwich board for wall maintenance, 60mm PU foaming integrated roof, and 18mm cement fiberboard + PVC floor for bottom laying.

## Technical Parameter:

Wind Resistance: 210km/h                      Roof live load: 1.00kN/m<sup>2</sup>  
 Snow Load: 1.00kN/m<sup>2</sup>                      Floor live load: 2.50kN/m<sup>2</sup>

## Material Description:

- 1. Contaner Frame:** All profiles are made of Q355 low alloy carbon structural steel, hot dip galvanizing, and make electrostatic powder coatingtreatment after welding completion.
- 2. Roof Panel:**60mm thickness 60mm PU, PU density:40kg/m<sup>3</sup>, 0.45mm thickness upper colored steel sheet, 0.4mm lower colored steel sheet, color:white-grey, Aluminized zinc AZ50g/m<sup>2</sup>+PE baking finish15/5um.
- 3. Wall Panel:**50mmEPS Sandwich Panel, EPS density:12kg/m<sup>3</sup>.Both steel sheet thickness are 0.45mm, the outer panel is ivory white (with ribs), and the inner panel is opalescent, wall panel double-sided covering. Colored steel sheet: Aluminized zinc AZ50g/m<sup>2</sup>+PE baking finish15/5um.
- 4. Floor:**1.8mmPVC Floor+18mm cement fiberboard. The color of PVC floor is blue spot/wood grain.
- 5. Door:**960x2080mm Steel Door
- 6. Window:**980x1150mm PVC single glass shift window (with screen window inside).
- 7. Electricity:** standard fits with 2\*30w LED ceiling lamp (L=1200mm) , 1\*single switch, 2\*10A socket,1\*8 circuits distribution box(inside with 1\*2P 32A main circuit breaker (with leakage protection) ,1\*1P 10A Lighting circuit, 2\*1P socket circuit) .1\*32A 3 grade outdoor waterproof inlet socket.
- 8. Bathroom Standard:** This container house does not contain bathroom part.

电力	暖通	动力
建筑	结构	给排水
会	签	

Copyright 2016.  
 版权所有 2016。  
 ALL RIGHTS RESERVED. NO PART OF THIS DOCUMENT MAY BE REPRODUCED OR TRANSMITTED IN ANY FORM OR BY ANY MEANS, ELECTRONIC OR MECHANICAL, WITHOUT PERMISSION IN WRITING FROM THE COPYRIGHT HOLDER.

图名	描述	日期	负责人
	Description	Date	Who used

**PTH**

Zhejiang Putian integrated housing Co., Ltd.  
 Hangzhou Zhonggu Architecture Design (Institute) Co., Ltd.

证书等级	
证书编号	

合作设计单位  
 Cooperative Designer

工序	签名	日期
Process	Signature	Date
审定		
Authorized By		
审核		
Verified By		
项目负责人		
Process		
校对人		
Checked By		
设计	sy	04/26/19
Designed By		
制图	sy	04/26/19
Drawn By		

执业签章  
 Engineer Signature

出图签章  
 Engineer Signature

项目名称  
 Project Name

8x20A-经济型

图名  
 Title

设计说明

工程编号	8x20A-经济型	专业	JZ
Title No.		Discipline	
比例		图号	JO-0
Scale		Fig. No.	

未盖技术出图章 本图纸无效  
 This drawing is valid only when being stamped and released by the BDD.

电力	暖通	动力
建筑	结构	给排水
会	签	

### Fitting Option:

1. Container wall thickness option is 50mm、60mm、70mm、100mm. Inside sandwich material option is EPS (Density 12kg/m<sup>3</sup>), PU (density is 40kg/m<sup>3</sup>), Rock wool (density is 120kg/m<sup>3</sup>).
3. Container frame color option is dark gray、white gray、red、blue. Wall color is also optional.
4. Electricity option is adding air conditioning socket.
5. Window option is PVC window/Aluminum alloy window. Option: Add windproof shutter or steel security fence

Copyright 2016.  
 本图档版权归浙江普天集成房屋有限公司所有，如本工程中未标注的均为公共领域标准。  
 All rights reserved. This drawing is the property of ZHEJIANG PUTIAN INTEGRATED HOUSING CO., LTD. WITHOUT CONSENT MUST BE OBTAINED BEFORE REPRODUCTION OR DISSEMINATION OF THIS DRAWING.

图名	描述内容	日期	负责人
	Description	Date	Who used

**PTH**  
 Zhejiang Putian integrated housing Co., Ltd.  
 Hangzhou Zhonggu Architecture Design (Institute) Co., Ltd.

证书等级	
证书编号	

合作设计单位  
 Cooperative Designer

工序	签名	日期
Process	Signature	Date
审定		
Authorised By		
审核		
Verified By		
项目负责人		
Process		
校对人		
Checked By		
设计		06/01/19
Designed By		
制图		06/01/19
Drawn By		

执业签章  
 Engineer Signature

出图签章  
 Engineer Signature

项目名称  
 Project Name  
 8x20B

图名  
 Title  
 Design Description

工程编号	8x20B-标准型	专业	JZ
Title		Discipline	
比例		图号	J0-0
Scale		Eng. No.	

未盖技术出图章 本图纸无效  
 This drawing is valid only after being stamped and released by the BQS.

会	电	电	电
签	力	力	力
建	通	通	通
筑	水	水	水
构			
造			
工			



Copyright 2016.  
 本图档版权归浙江普天集成房屋有限公司所有，如本工程中任何部分被复制或再行传播，均须事先取得浙江普天集成房屋有限公司书面许可。  
 ALL RIGHTS RESERVED BY ZHEJIANG PUTIAN INTEGRATED HOUSING CO., LTD. WRITTEN CONSENT MUST BE OBTAINED BEFORE ANY RE-USE, REPRODUCTION OR DISSEMINATION.

图名	描述	日期	负责人
Rev.	Description	Date	Who used

**PTH**

Zhejiang Putian Integrated Housing Co., Ltd.  
 Hangzhou Zhonggu Architecture Design (Institute) Co., Ltd.

证书等级	
证书编号	

合作设计单位  
 Cooperative Designer

工序 Process	签名 Signature	日期 Date
审定 Authorized By		
审核 Verified By		
项目负责人 Process		
校对人 Checked By		
设计 Designed By	sy	04/26/19
制图 Drawn By	sy	04/26/19

执业签章  
 Engineer Signature

出图签章  
 Engineer Signature

项目名称  
 Project Name  
 8x20A

图名  
 Title  
 3D

工程编号 Title	8x20A-经济型	专业 Discipline	JZ
比例 Scale		图号 Fig. No.	J0-1

未盖技术出图章本图无效  
 This drawing is valid only after being stamped and released by the BDD.

会	建	电
签	筑	力
构	结	配
水	构	通
	造	力
	排	动
	水	力



Copyright 2016.  
 本图档版权归浙江中天集成房屋有限公司所有，如本工程中任何内容被复制或再行传播，均须事先取得浙江中天集成房屋有限公司书面许可。  
 THE COPYRIGHT OF THIS DRAWING IS RESERVED BY ZHEJIANG PUTIAN INTEGRATED HOUSING CO., LTD. WRITTEN CONSENT MUST BE OBTAINED BEFORE ANY RE-USE, REPRODUCTION OR DISSEMINATION OF THIS DRAWING.

图名	描述内容	日期	编写人
Fig.	Description	Date	Who used

**PTH**

Zhejiang Putian integrated housing Co., Ltd.  
 Hangzhou Zhonggu Architecture Design (Institute) Co., Ltd.

证书等级	
证书编号	

合作设计单位  
 Cooperative Designer

工序	签名	日期
Process	Signature	Date
审定		
Authorized By		
审核		
Verified By		
项目负责人		
Process		
校对人		
Checked By		
设计	sy	04/26/19
Designed By		
制图	sy	04/26/19
Drawn By		

执业签章  
 Engineer Signature

出图签章  
 Engineer Signature

项目名称  
 Project Name

8x20A

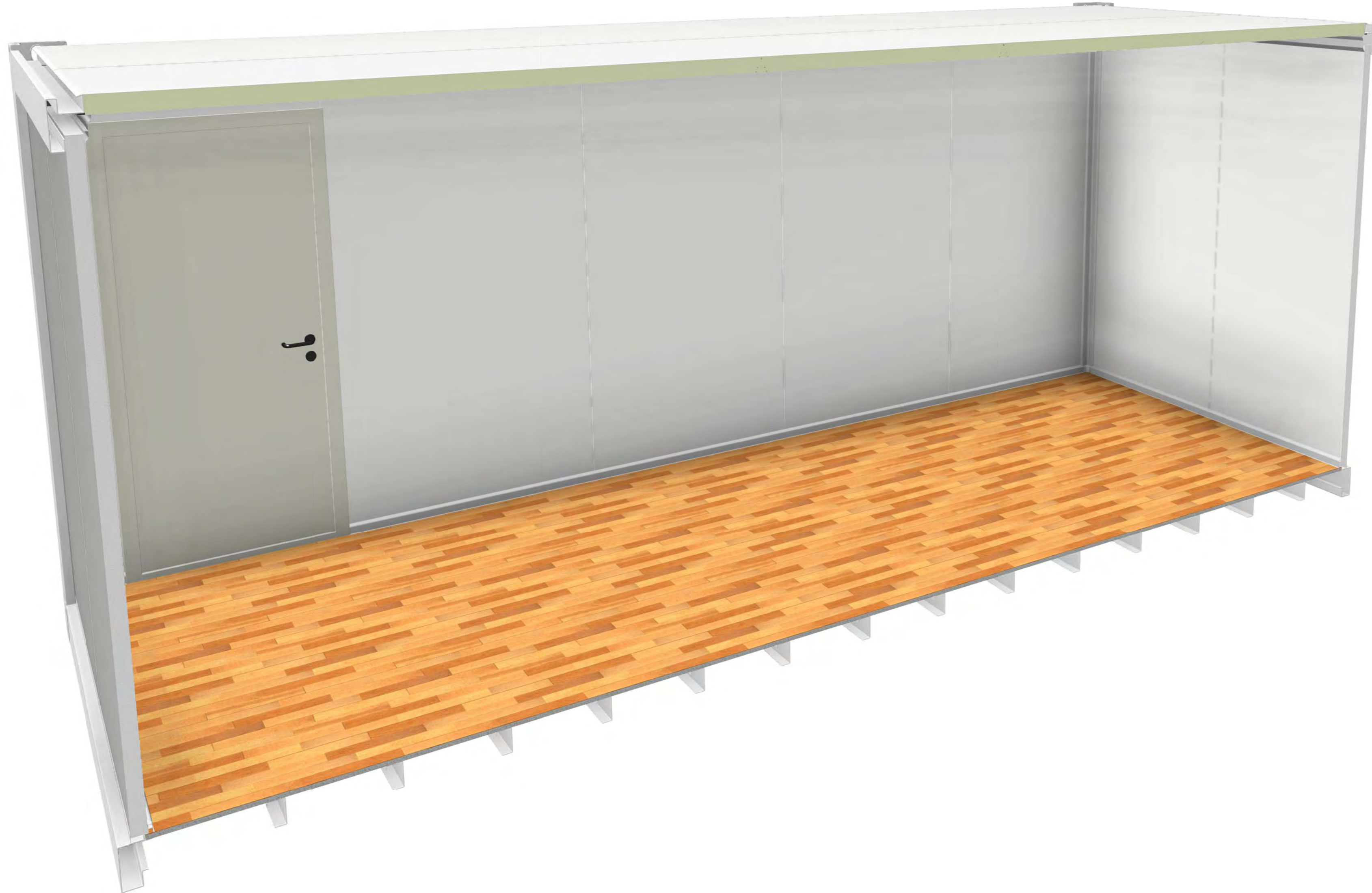
图名  
 Title

3D

工程编号	8x20A-经济型	专业	JZ
Title		Discipline	
比例		图号	J0-2
Scale		Fig. No.	

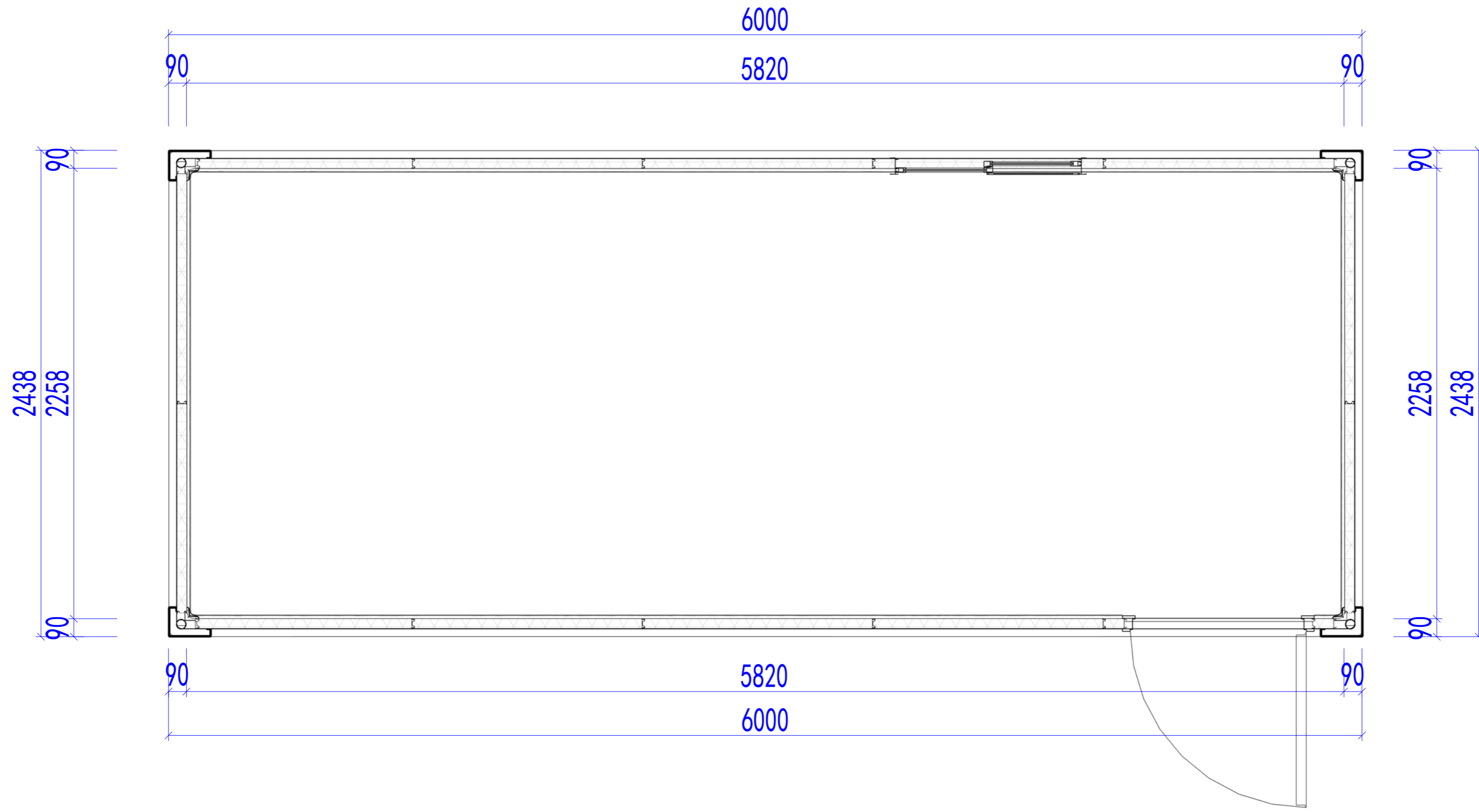
未盖技术出图章 本图纸无效  
 This drawing is valid only after being stamped and released by the BDD.

会	电	建
签	力	筑
审	通	结
核	力	构
	动	水
	力	



Copyright 2016. <small>本图档版权归浙江中天集成房屋有限公司所有，如本工程中任何材料均须遵照本图档。          All rights reserved by Zhejiang Putian Integrated Housing Co., Ltd. All contents of this drawing contained by Zhejiang Putian Integrated Housing Co., Ltd. Written consent must be obtained before any use for reproduction or other purposes.</small>		
图名	描述内容	日期
	Description	Date
<b>PTH</b>		
Zhejiang Putian Integrated Housing Co., Ltd. Hangzhou Zhonggu Architecture Design (Institute) Co., Ltd.		
证书等级		
证书编号		
合作设计单位	Cooperative Designer	
工序	签名	日期
Process	Signature	Date
审 定		
Authorized By		
审 核		
Verified By		
项目负责人		
Process		
校对人		
Checked By		
设 计	sy	04/26/19
Designed By		
制 图	sy	04/26/19
Drawn By		
执业签章 Engineer Signature		
出图签章 Engineer Signature		
项目名称 Project Name		
8x20A		
图 名 Title		
3D		
工程编号	8x20A-经济型	专 业
Title		Discipline
比 例		图号
Scale		Fig. No.
		JZ
		JO-3
未盖技术出图章本图纸无效 This drawing is valid only after being stamped and released by the BDD.		

电力	暖通	动力
建筑	结构	给排水
会	签	



Layout plan

Copyright 2016.  
 本图档版权归浙江中天建筑设计有限公司所有，如本工程中任何部分被复制或再行传播，均须事先取得本公司的书面许可。  
 ALL RIGHTS OF THE COPYRIGHT IN THIS DRAWING CONTAINED BY ZHONGTIAN PUTIAN INTEGRATED HOUSING CO., LTD. WRITTEN CONSENT MUST BE OBTAINED BEFORE ANY REUSE, REPRODUCTION OR DISSEMINATION.

图名	描述	日期	负责人
Rev.	Description	Date	Who used

**PTH**

Zhejiang Putian Integrated Housing Co., Ltd.  
 Hangzhou Zhonggu Architecture Design (Institute) Co., Ltd.

证书等级	
证书编号	

合作设计单位  
 Cooperative Designer

工序	签名	日期
Process	Signature	Date
审定		
Authorized By		
审核		
Verified By		
项目负责人		
Process		
校对人		
Checked By		
设计	sy	04/26/19
Designed By		
制图	sy	04/26/19
Drawn By		

执业签章  
 Engineer Signature

出图签章  
 Engineer Signature

项目名称  
 Project Name  
 8x20A

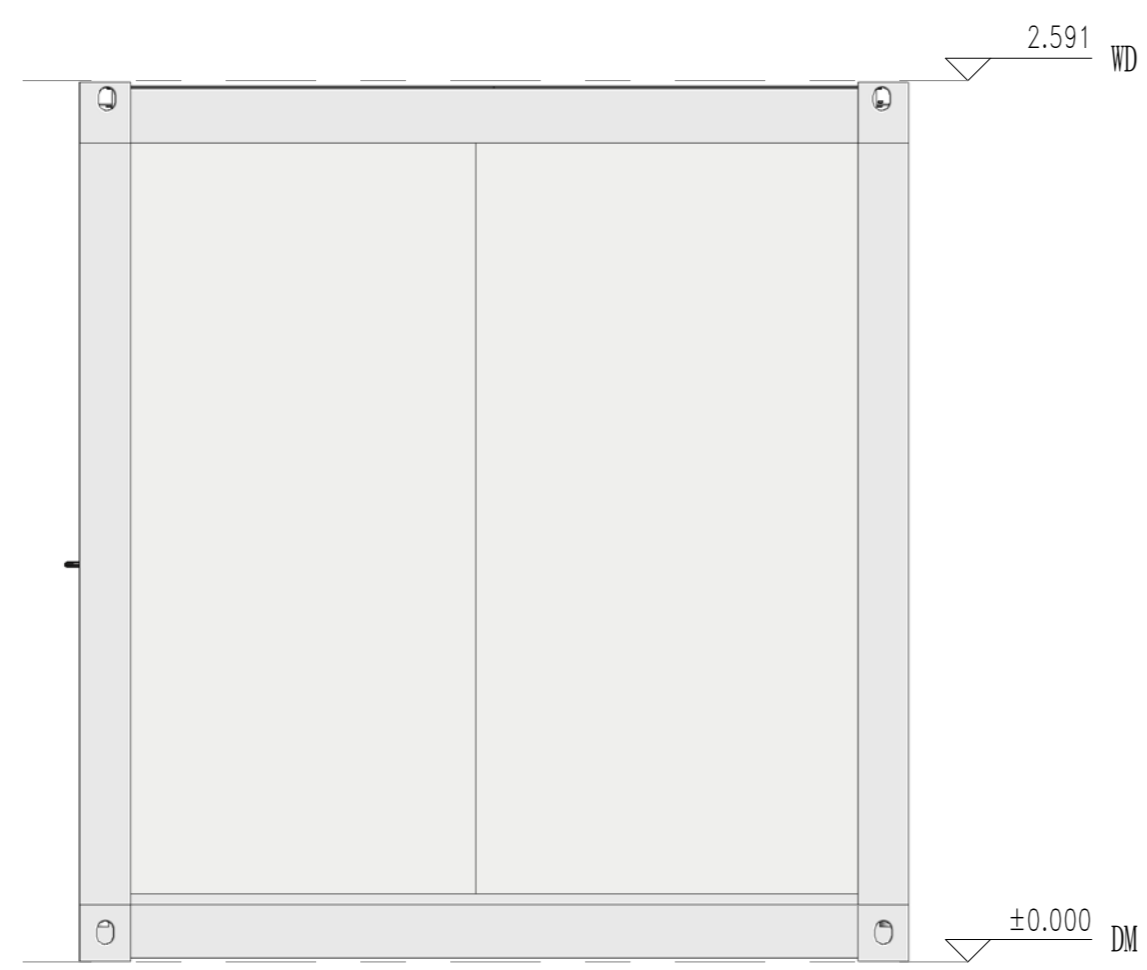
图名  
 Title  
 Layout plan

工程编号	8x20A-经济型	专业	JZ
Title		Discipline	

比例	图号
Scale	Fig. No.

未盖技术出图章 本图纸无效  
 This drawing is valid only after being stamped and released by the BDD.

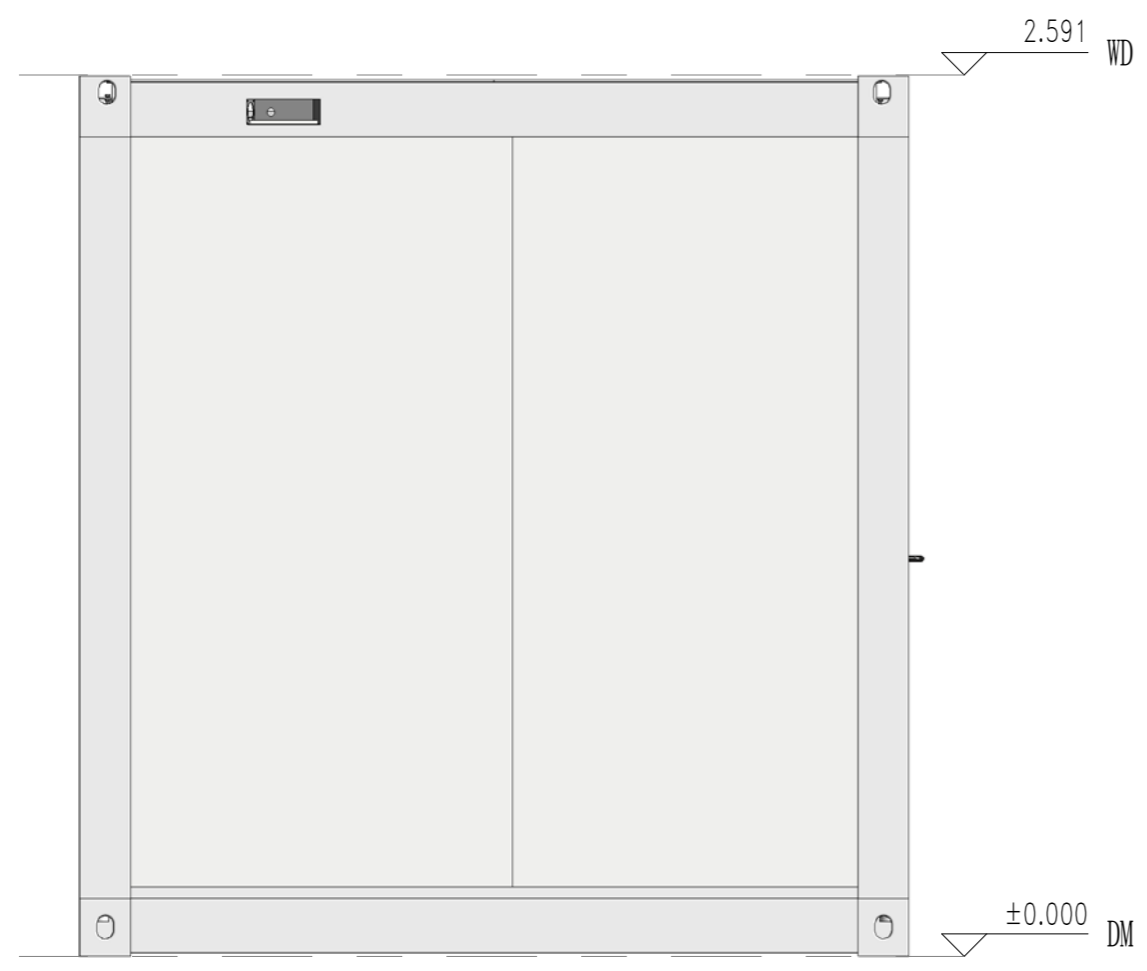
电力	暖通	动力
建筑	结构	给排水
会	签	



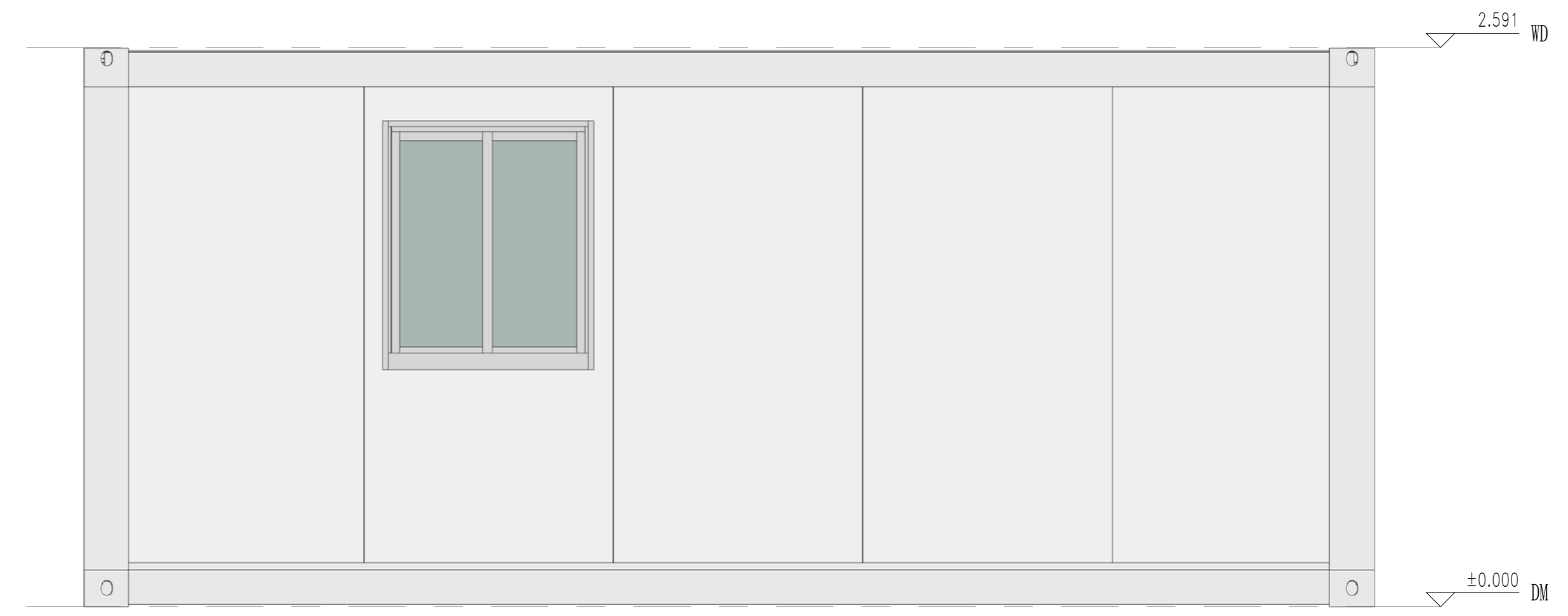
East elevation



South elevation



West elevation



North elevation

Copyright 2016.  
 本图档版权归浙江中天建筑设计有限公司所有，如本工程中未标注的图档均归中天建筑设计有限公司所有。  
 THE ARCHITECTURE OF THE COPYRIGHT IN THIS DRAWING OBTAINED BY ZHONGTIAN PUTIAN INTEGRATED HOUSING CO., LTD. WRITTEN CONSENT MUST BE OBTAINED BEFORE ANY USE OR REPRODUCTION OF THE DRAWING.

版本	修改内容	日期	编写人
Ver.	Description	Date	Who used

**PTH**

Zhejiang Putian integrated housing Co., Ltd.  
 Hangzhou Zhonggu Architecture Design (Institute) Co., Ltd.

证书等级	
证书编号	

合作设计单位  
 Cooperative Designer

工序	签名	日期
Process	Signature	Date
审定		
Authorized By		
审核		
Verified By		
项目负责人		
Process		
校对		
Checked By		
设计	sy	04/26/19
Designed By		
制图	sy	04/26/19
Drawn By		

执业签章  
 Engineer Signature

出图签章  
 Engineer Signature

项目名称  
 Project Name

8x20A

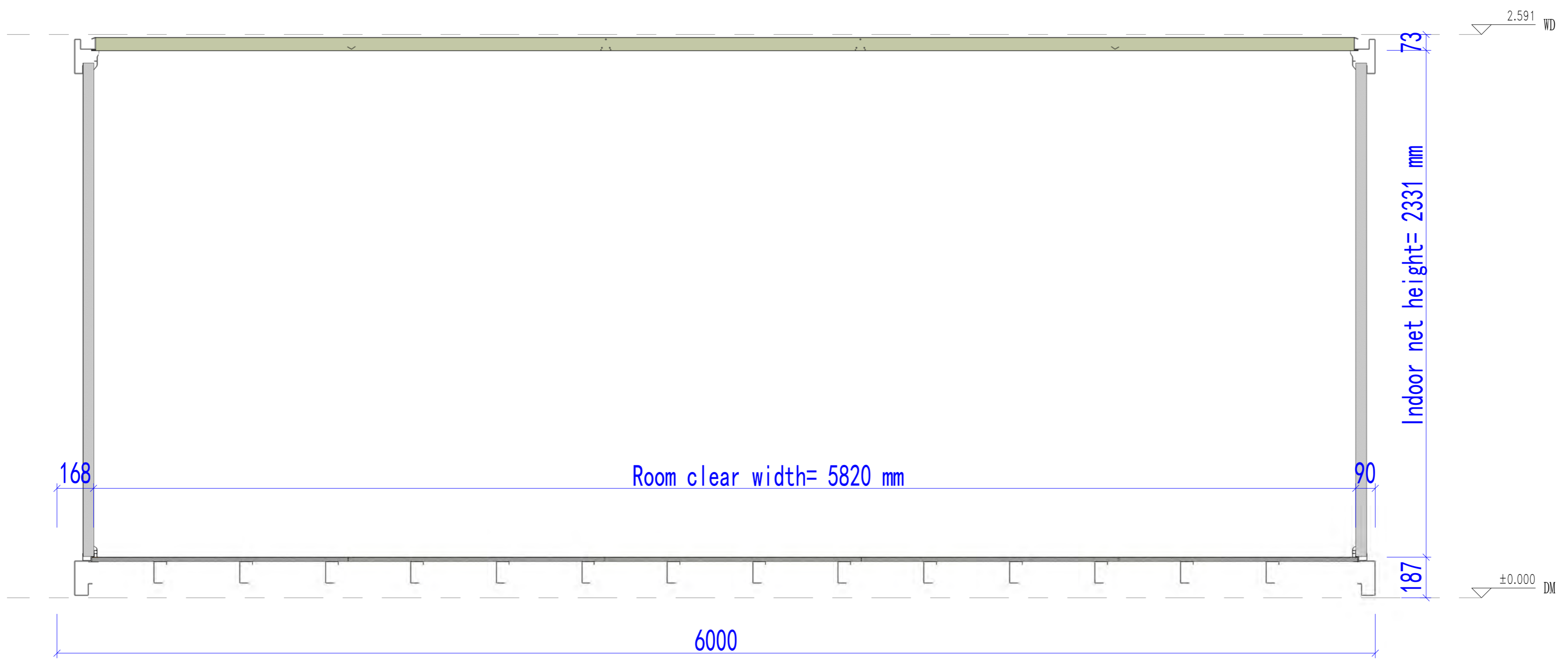
图名  
 Title

Elevation view

工程编号	8x20A-经济型	专业	JZ
Title		Discipline	
比例		图号	J0-6
Scale		Fig. No.	

未盖技术出图章本图无效  
 This drawing is valid only when being stamped and released by the BDD.

会	建	电
签	筑	力
	结	配
	构	通
		动
		力
	给	
	排	
	水	



Section layout plan

Copyright 2016.  
 本图档版权归浙江中天建筑设计有限公司所有，如本工程中任何部分被复制或再行传播，均须事先取得本公司的书面许可。  
 ALL RIGHTS OF THE COPYRIGHT IN THIS DRAWING CONTAINED BY ZHONGTIAN PUTIAN INTEGRATED HOUSING CO., LTD. WRITTEN CONSENT MUST BE OBTAINED BEFORE ANY REUSE, REPRODUCTION OR DISSEMINATION OF THE DRAWING.

图名	修改内容	日期	修改人

**PTH**  
 Zhejiang Putian integrated housing Co., Ltd.  
 Hangzhou Zhonggu Architecture Design (Institute) Co., Ltd.

证书等级	
证书编号	

合作设计单位  
 Cooperative Designer

工序	签名	日期
审定		
审核		
项目负责人		
校对		
设计	sy	04/26/19
制图	sy	04/26/19

执业签章  
 Engineer Signature

出图签章  
 Engineer Signature

项目名称  
 Project Name  
**8x20A-经济型**

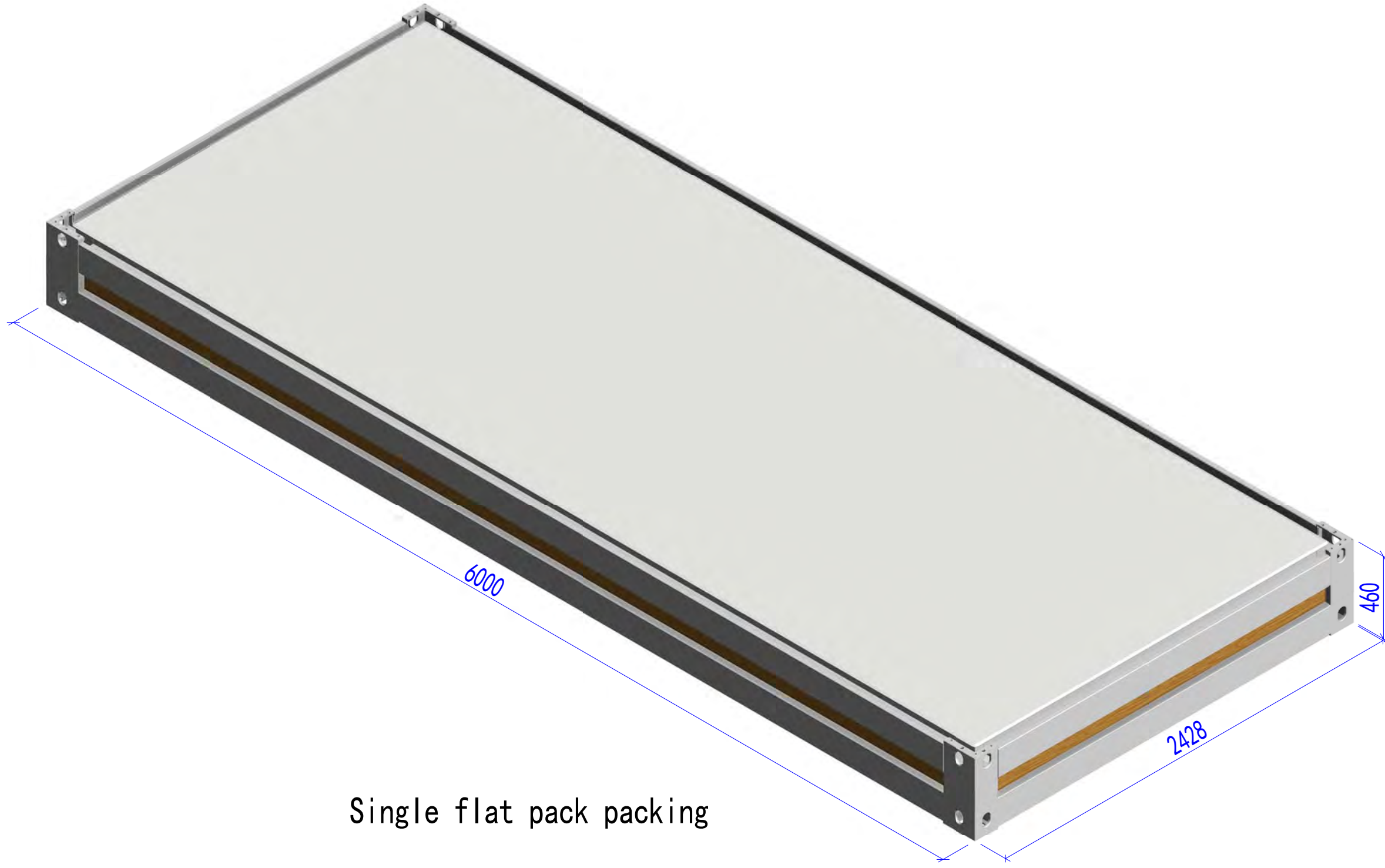
图名  
 Title  
**剖面**

工程编号	8x20A-经济型	专业	JZ
比例		图号	JO-7

未盖技术出图章本图无效  
 This drawing is valid only after being stamped and released by the BDD.



会	建	电
签	筑	力
	结	暖
	构	通
	给	动
	排	力
	水	



Single flat pack packing

Copyright 2016.  
 本图版权归浙江中天集成房屋有限公司所有，除本工程外本图的任何其它用途和复制，  
 必须取得本公司的书面许可。  
 THE OWNERSHIP OF THE COPYRIGHT IN THIS DRAWING IS RETAINED BY ZHEJIANG  
 PUTIAN INTEGRATED HOUSING CO.,LTD. WRITTEN CONSENT MUST BE OBTAINED BEFORE  
 ANY USE OR REPRODUCTION OF THE DRAWING.

版本	修改内容	日期	发布人
Rev.	Description	Date	who send



Zhejiang Putian integrated housing Co., Ltd.  
 Hangzhou Zhonggu Architecture Design (institute) Co., Ltd.

证书等级	
证书编号	

合作设计单位  
 Cooperative Designer

工序	签名	日期
Process	Signature	Date
审定		
Authorized By		
审核		
Verified By		
项目负责人		
Process		
校对		
Checked By		
设计	设计者	05/09/19
Designed By		
制图	作者	05/09/19
Drawn By		

执业签章  
 Engineer Signature

出图签章  
 Engineer Signature

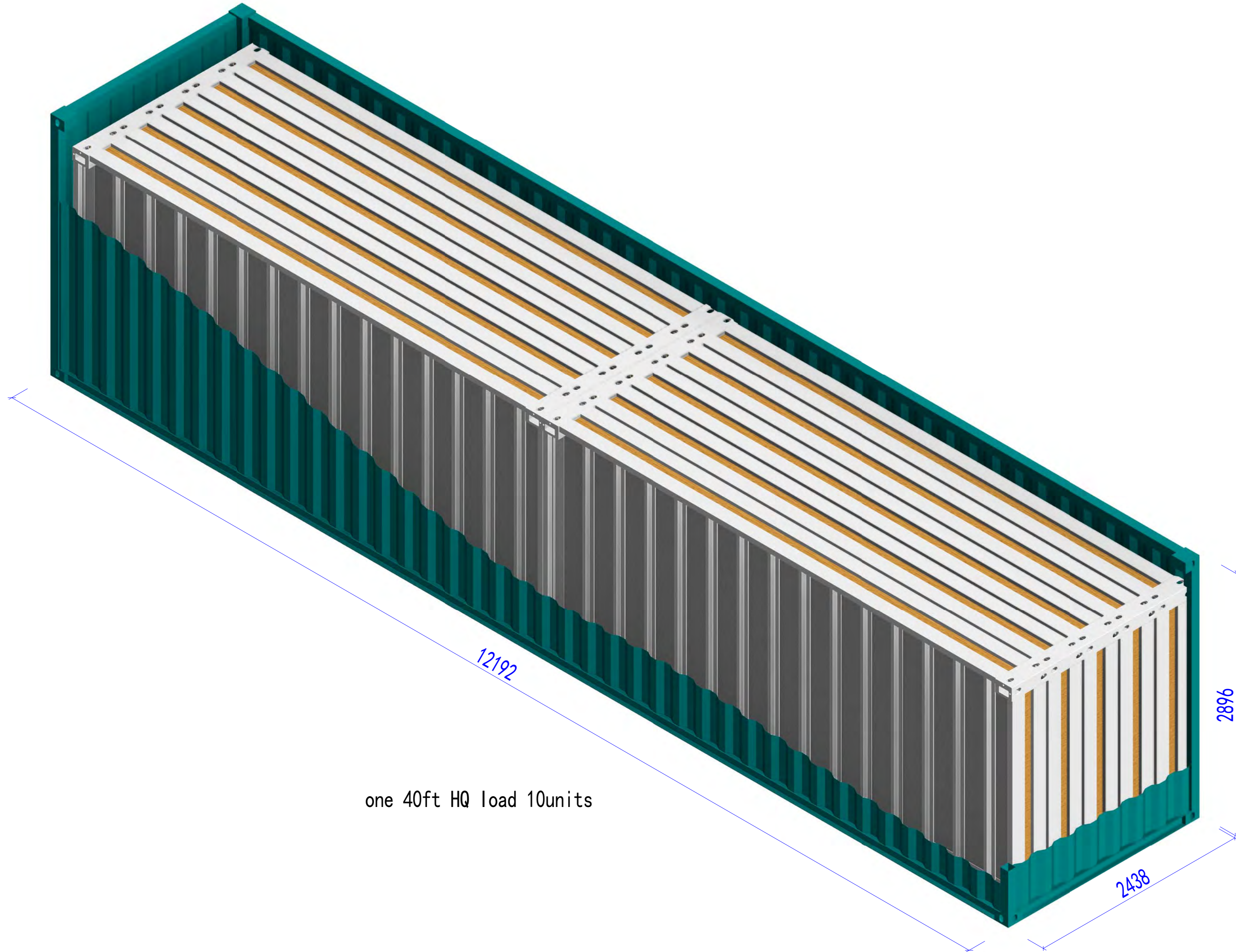
项目名称  
 Project Name  
 5980x2438

图名  
 Title  
 Single flat pack packing

工程编号	5980x2438	专业	JZ
Title		Title	
比例		图号	J1-1
Scale		Dep. No.	

未盖技术出图章 本图纸无效  
 This drawing is valid only after being stamped and released by the R&D

电力	暖通	动力
建筑	结构	给排水
会	签	



one 40ft HQ load 10units

Copyright 2016.  
 本图档版权归浙江普天集成房屋有限公司所有，未经许可不得复制或传播。  
 ALL RIGHTS RESERVED. THIS DRAWING IS THE PROPERTY OF ZHEJIANG PUTIAN INTEGRATED HOUSING CO., LTD. WRITTEN CONSENT MUST BE OBTAINED BEFORE ANY REUSE OR REPRODUCTION OF THIS DRAWING.

图名	描述	日期	负责人
	Description	Date	Who used

**PTH**

Zhejiang Putian integrated housing Co., Ltd.  
 Hangzhou Zhonggu Architecture Design (Institute) Co., Ltd.

证书等级: \_\_\_\_\_  
 证书编号: \_\_\_\_\_

合作设计单位: \_\_\_\_\_  
 Cooperative Designer: \_\_\_\_\_

工序	签名	日期
Process	Signature	Date
审定		
Authorised By		
审核		
Verified By		
项目负责人		
Process		
校对人		
Checked By		
设计	sy	06/01/19
Designed By		
制图	sy	06/01/19
Drawn By		

执业签章  
 Engineer Signature

项目名称  
 Project Name

5980x2438

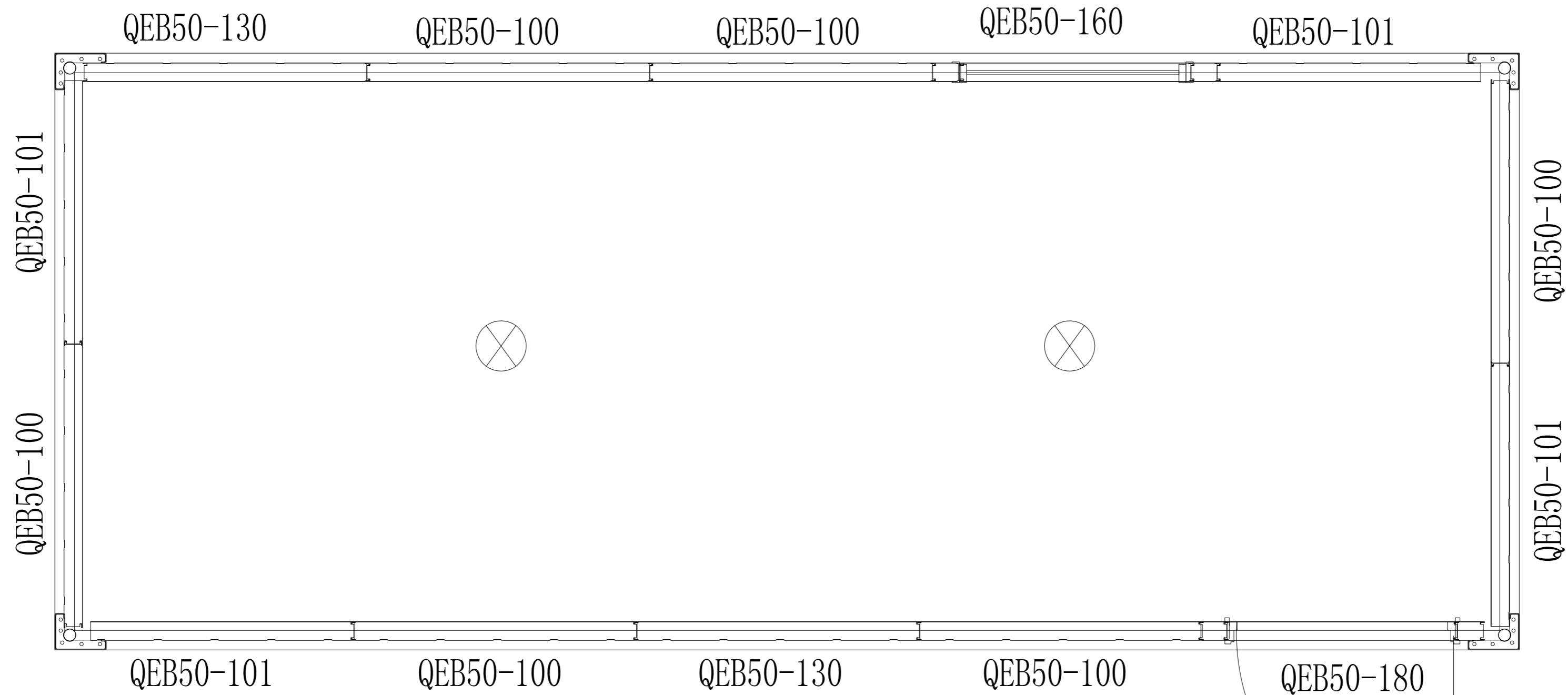
图名  
 Title

单个高柜装10套

工程编号	5980x2438	专业	JZ
Title		Discipline	
比例		图号	J1-2
Scale		Fig. No.	

未盖技术出图章 本图纸无效  
 This drawing is valid only after being stamped and released by the BMS.

电	力
通	风
水	电
暖	气
给	排
水	水



墙板布置图

Copyright 2016.  
 本图版权归浙江普天集成房屋有限公司所有，如未经许可擅自复制或传播，  
 浙江普天集成房屋有限公司保留追究法律责任的权利。  
 THE COPYRIGHT OF THIS DRAWING OBTAINED BY ZHEJIANG PUTIAN INTEGRATED HOUSING CO., LTD. WRITTEN CONSENT MUST BE OBTAINED BEFORE ANY REPRODUCTION OF THE DRAWING.

姓名	姓名	日期	姓名
Ren:	Description	Date	Who send



Zhejiang Putian integrated housing Co., Ltd.  
 Hangzhou Zhongpu Architecture Design (Institute) Co., Ltd.

证书等级

证书编号

合作设计单位  
 Cooperative Designer

工序	签名	日期
Process	Signature	Date

审定		
Authorized By		

审核		
Verified By		

项目负责人		
Process		

校对人		
Checked By		

设计		
Designed By		

制图		
Drawn By		

执业签章  
 Engineer Signature

执业签章  
 Engineer Signature

执业签章  
 Engineer Signature

执业签章  
 Engineer Signature

执业签章  
 Engineer Signature

执业签章  
 Engineer Signature

执业签章  
 Engineer Signature

执业签章  
 Engineer Signature

执业签章  
 Engineer Signature

执业签章  
 Engineer Signature

执业签章  
 Engineer Signature

执业签章  
 Engineer Signature

执业签章  
 Engineer Signature

执业签章  
 Engineer Signature

执业签章  
 Engineer Signature

执业签章  
 Engineer Signature

执业签章  
 Engineer Signature

执业签章  
 Engineer Signature

工程编号	专业	JZ
Title	Title	

比例	图号
Scale	Design No.

未盖技术出图章本图无效  
 The drawing is invalid without the technical drawing stamp.